



Genesis Outreach, Inc.
presents

JESUS CHRIST **SUPERSTAR**

A CLASSIC ROCK MUSICAL.

A VISIONARY NEW PRODUCTION.

AN UNMISSABLE THEATRICAL EVENT.





Together
WE CAN



N.V.M.G.

Media For Life!



N-DEPTH
MINDSET

GENESIS OUTREACH
presents

JESUS CHRIST
SUPERSTAR

Lyrics by

TIM RICE

Music by

**ANDREW LLOYD
WEBBER**

Lighting Design by

COREY LEE

Costume Design by

RIN ULICK

Sound Design by

TERA WOOLLEY

Scenic Construction by

BEN RONEY

Associate Lighting Design by

BRENDEN ROWAN

Assistant Stage Management by

JOY HENDERSON

Production Stage Management by

SHAWNA ROBERTS

Choreography by

MANDIE KOLKMAN

OLIVIA RANG

ERIC SMEAD

Artistic & Musical Direction by

BRANDON PORTER

"Jesus Christ Superstar" is presented by arrangement with
Concord Theatricals on behalf of The Really Useful Group



Director's Notes

Jesus Christ Superstar has long stood as a groundbreaking work in the musical theatre canon—bold, provocative, and urgent. In this reimagined production, we move beyond the

confines of the traditional biblical epic to examine the raw humanity at the heart of this story. We are drawn to its timeless questions—about faith, power, loyalty, and the price of belief—and how startlingly relevant they feel in today's fractured world. Set against a contemporary backdrop, we must ask ourselves: If Jesus walked among us today, what would he see? Who would follow him? And how would power respond to his presence?

At its core, we lean into the complexities of Jesus, Judas, and the followers—not as distant icons, but as relatable people—flawed, conflicted, and seeking connection in a divided world. We've shaped the narrative through a lens that echoes our current societal struggles: ideological division, systemic injustice, and the longing for hope amidst chaos. This production doesn't offer easy answers, but rather challenges us to sit in the tension between devotion and disillusionment. It's a world where everyone is searching for truth, and where that truth is often uncomfortable. We must ask ourselves: what does radical love, justice, and truth look like in today's world?

This production has truly been a labor of love—made possible by an extraordinary collective of artists, volunteers, and supporters who gave of their time, talent, and spirit. Genesis Outreach Presents is honored to bring this story to our community. Theatre has the power to spark conversation, foster empathy, and reflect the world back to itself in transformative ways. *Jesus Christ Superstar* asks us to look again—at ourselves, our world, and the enduring power of belief, betrayal, and grace.

Brandon Porter

Brandon Porter is a highly sought-after freelance stage director, musical director, educator, and vocal coach, known for his work with several organizations across the city. He has been involved with numerous theatre companies in Fort Wayne, receiving multiple awards for his outstanding music direction, including two BroadwayWorld Awards. His notable projects include FUN HOME, DOGFIGHT, and ONCE ON THIS ISLAND (Three Rivers Music Theatre), JESUS CHRIST SUPERSTAR (Indiana University Theatre), RAGTIME, PARADE, and PURLIE (Genesis Outreach Presents). He serves as the Co-Producer and Artistic Director with Genesis Outreach Presents.

UP NEXT FROM IMTF



NEXT STAGE

COLLEGE & CAREER PROGRAMMING

COLLEGE AUDITIONS: 101

ARE YOU A STUDENT WHO'S PLANNING TO AUDITION FOR A COLLEGE MUSICAL THEATRE, FILM, OR ACTING PROGRAM?

OR ARE YOU A PARENT THAT IS NEW TO THE WHOLE PROCESS AND HAS NO IDEA WHAT YOUR STUDENT IS GETTING INTO?

THIS CLASS WILL EQUIP PARENTS/GUARDIANS AND STUDENTS WITH THE KNOWLEDGE THEY NEED TO HAVE A LESS STRESSFUL, MORE INFORMED, SUCCESSFUL COLLEGE APPLICATION AND AUDITION PROCESS.

SATURDAY, MAY 31, 2025

9 AM - 12 PM
BREAK FOR LUNCH
1:30 PM - 4:30 PM

REGISTER AT IMTFINC.COM

LIMITED SPACE
AVAILABLE

Flops!

THE BEST SONGS FROM
BROADWAY'S BIGGEST BOMBS

UNDER THE DIRECTION OF
AARON HAWLEY

MUSICAL DIRECTION BY
PETER KLOPFENSTEIN

JUNE 13 & 14 - 7:30 PM
RKF STUDIOS
2446 LAKE AVENUE



INDIANA
MUSICAL
THEATRE
FOUNDATION



Fort Wayne Summer Music Theatre Presents

SWEENEY TODD

THE DEMON BARBER OF FLEET STREET

Music and Lyrics By Stephen Sondheim Book By Hugh Wheeler

Homestead High School Auditorium: July 11, 12, 13, 18, 19, 20

INDIANA
MUSICAL
THEATRE
FOUNDATION



Presented in special arrangement with Music Theatre International (MTI)



IMTFINC.COM

AVENUE



INDIANA
MUSICAL
THEATRE
FOUNDATION



September 12-21 2025
Arena Dinner Theatre

Directed by Alex Leavell & Andrew Sherman
Musical Direction by Christy Maloney & Peter Klopfenstein

Leave the Kids at Home
for This Puppet Show!

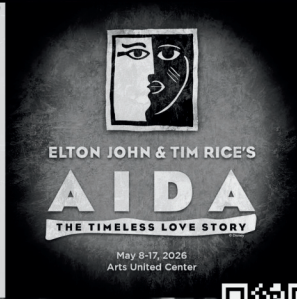
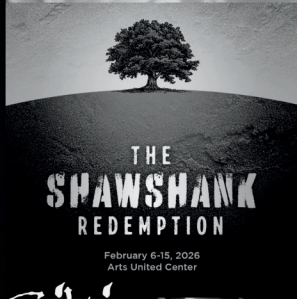
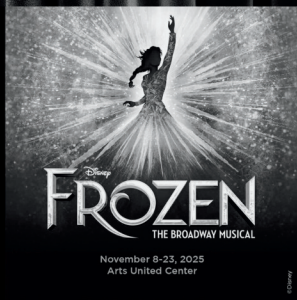
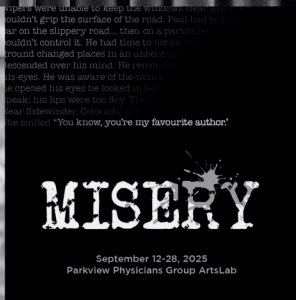
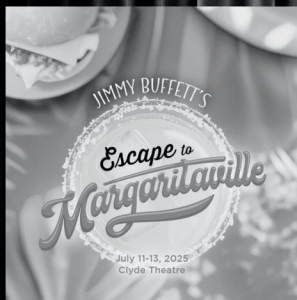


@in_musical_theatre_foundation



@IndianaMusicalTheatreFoundation

2025-2026 Season



Civic
theatre

Join us for our 98th Anniversary
Tickets on sale now



11A ▶

12



LEAVELL ORIGINALS
FILM + PHOTO

BOOK YOUR SESSION TODAY!

✉ ALEXANDERLEAVELL@GMAIL.COM

📷 LEAVELLORIGINALS

- Senior Photos
- Headshots
- Concerts & Events

HOME OF THE \$20 HEADSHOT!

11A ▶

12

THE MOST INFLUENTIAL AND PROLIFIC COMEDY
THEATRE IN THE WORLD!

The Second City[®] WORKS

SECONDCITY.COM/CHICAGO

the
FIND

*proudly supports
Genesis Outreach
Presents*

The FIND is a lifestyle general store, with a strong focus on tasteful and chic home decor, gifts and apparel. Visit us at 133 w. Wayne Street or online at thefindfw.com.

BIG FISH

BOOK BY JOHN AUGUST

MUSIC & LYRICS BY ANDREW LIPPA

Based on the novel by Daniel Wallace & The Columbia Motion Picture written by John August

June 13-28, 2025

Reserve tickets: 260-422-4226 or order online: arenadinnertheatre.org

Arena Dinner Theatre is a 501(c)(3) Nonprofit Organization

BIG FISH is presented through special arrangement with and all authorized performance materials are supplied by Theatrical Rights Worldwide 1180 Avenue of the Americas, Suite 640, New York, NY 10036
www.theatricalrights.com

You are not alone.

"When the world says 'give up',
hope whispers 'give it one more try'."

-Unknown



NEW WAVE WELLNESS
Hope in Motion

BEHAVIOR MANAGEMENT

MUSIC THERAPY

RECREATIONAL THERAPY

www.newwavewellness.org (260)557-5519 info@newwavewellness.org



Martel Harris



Jaina Berry



Brad Beauchamp



Olivia Conn



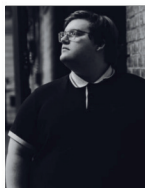
AJ Lorenzini



Ashton Barnhouse



Lina Willard



Gabriel Zimmerman



Ryan Peroza



Lincoln Everetts



Chrissy Borne



Anya Goulloff-Smead



Al Pippins



Mandie Kolkman



Cora Lee



Tamia Beverly



Dave Ealy



EJ Fikes



De'Andre M. Martin



Jackson McKinney



Leslie Ringger



Angela Shaw



Anna Ousley

Cast

Jesus	MARTEL DE'QUAN HARRIS
Judas	JAINA BERRY
Mary Magdalene	OLIVIA CONN
Pilate	BRAD BEAUCHAMP
King Herod	AJ LORENZINI
Peter	ASHTON BARNHOUSE
Simon/Featured Dancer	LINCOLN EVERETTS
Caiaphas	GABRIEL ZIMMERMAN
Annas/Follower	LINA WILLARD
Priest	RYAN PEROZA
Follower/Featured Dancer/Gossiper	CHRISSY BORNE
Follower/Featured Dancer/Gossiper ...	ANYA GOULOFF-SMEAD
Follower/Featured Dancer/Gossiper	CORA LEE
Follower/Featured Dancer	AL PIPPINS
Featured Dancer	MANDIE KOLKMAN
Follower	TAMIA BEVERLY
Follower	DAVE EALY
Follower	JACKSON MCKINNEY
Follower	LESLIE RINGGER
Follower	ANGELA SHAW
Follower/Soldier	DE'ANDRE MARTIN
Follower/Soldier	EJ FIKES
Follower/Gossiper	ANNA OUSLEY

Content Warning

This production includes content that may be sensitive for some audience members. Scenes contain depictions of **suicide, drug and alcohol use, blood, torture, murder, and police brutality**, as well as **intense emotional themes surrounding faith, power, and betrayal**. The performance also utilizes **strobe lighting effects**.

Musical Numbers

<i>Overture</i>	Band
<i>Heaven On Their Minds</i>	Judas
<i>What's the Buzz</i>	Jesus, Mary, Followers
<i>Strange Thing Mystifying</i>	Judas, Jesus, Followers
<i>Everything's Alright</i>	Mary, Jesus, Judas, Followers
<i>This Jesus Must Die</i>	Caiaphas, Annas, Priest
<i>Hosanna</i>	Jesus, Followers
<i>Simon Zealotes</i>	Simon, Followers
<i>Poor Jerusalem</i>	Jesus
<i>Pilate's Dream</i>	Pilate
<i>The Temple</i>	Jesus, Followers
<i>Everything's Alright (Reprise)</i>	Mary, Jesus
<i>I Don't Know How to Love Him</i>	Mary
<i>Damned for All Time / Blood Money</i>	Judas, Priests
<i>The Last Supper</i>	Jesus, Judas, Followers
<i>Gethsemane (I Only Want to Say)</i>	Jesus
<i>The Arrest</i>	Jesus, Peter, Priests, Followers, Gossipers
<i>Peter's Denial</i>	Peter, Mary, Gossipers
<i>Pilate and Christ</i>	Pilate, Jesus
<i>King Herod's Song</i>	Herod
<i>Judas's Death</i>	Judas, Priests
<i>Trial/39 Lashes</i>	Pilate, Jesus, Mob
<i>Superstar</i>	Judas, Followers
<i>Crucifixion/John 19:41</i>	Jesus

JESUS CHRIST SUPERSTAR WILL BE PRENTED IN ONE ACT

**Any video and/or audio recording of this
production is strictly prohibited.**

Band

Bandleader/Piano - BRANDON PORTER

Guitar - NATE LESSER

Bass - KALEB WAIKEL

Drums - ZACH BROWN

Crew

Executive Producer - ALBERT BROWNLEE

Associate Producer - CHRISSY BORNE

Wardrobe Assistant - JILL BIXLER and JENNIFER BUINOWSKI

Assistant to the Director - AJ LORENZINI

Props Design - RYAN PEROZA

Set Construction/Painting - LA SEAN COLE, MYSAHN COLE,
WILLIAM COLE, MAGGIE DYE, MATT KEMPF, AARON MANN,
DE'ANDRE MARTIN,



GenesisOutreach, Inc.



**IMPACTING
OUR COMMUNITY
ONE FAMILY AT A TIME!**

Who's Who In The Cast

MARTEL HARRIS (*Jesus*) is a locally based performer and artist! This is his third full stage production with Genesis Outreach Presents and he is so excited to bring Jesus to life. Prior performances include *THE WEDDING SINGER* (George) *INTO THE WOODS* (Baker), *RENT* (Tom Collins) *CATS* (Rum Tum Tugger), *BAT BOY* (Rev. Hightowe/Mrs.Taylor), *PARADE* (Jim Conley) and *PURLIE* (Gitlow Judson). Martel would like to thank his friends and family for all their love and support. Insta:@dequanharris

JAINA BERRY (*Judas*) is ecstatic to be in yet another production with Genesis Outreach Presents! Her previous theatre credits include: Lola Stover in *Parade*, a Featured Dancer in *Chicago*, Vivienne Kensington in *Legally Blonde The Musical*, Princess Fiona in *Shrek The Musical*, and Logainne Schwartzandgrubenierre in *The 25th Annual Putnam County Spelling Bee*. Jaina is beyond thankful for her fellow cast members, and all the laughter and light they've brought to rehearsals and shows thus far. She is stoked to get the chance to play a female Judas!

OLIVIA CONN (*Mary Magdalene*) is excited to make her Genesis Outreach Presents debut! Past credits include *Waitress* (Club Knocked Up/Francine Pomatter), *The Rocky Horror Show* ("Singer"/Phantom), and international tours with *The Young Americans* in Japan, Hong Kong, Korea, Thailand, and the U.S. She sends a huge thank you to Brandon and this incredible cast and crew for making this production possible, and to her family, friends, and husband Sam for their endless love and support. @Olivia_c_Conn

BRAD BEAUCHAMP (*Pilate*) An accomplished, award-winning actor and director, Brad has been a familiar face to Fort Wayne audiences for forty years. Last seen onstage as Mitch in *Tuesdays with Morrie*, favorite roles also include Will Rogers (*The Will Rogers Follies*), Pseudolus (...*Forum*), Professor Harold Hill (*The Music Man*), Teach (*American Buffalo*), and Roma (*Glengarry Glen Ross*). Brad can be seen in the John Sayles film *Eight Men Out* and is a VO talent in the podcast GEEK BY NIGHT. Brad was honored with a Lifetime Achievement Award for his work with SOCA at USF.

AJ LORENZINI (*King Herod*) returns for his third show with Genesis Outreach Presents, after appearing in *Parade* (Gov. Slaton) and *Ragtime* (JP Morgan). Other favorite local credits include *The Drowsy Chaperone* (Aldolpho), *Into the Woods* (Cinderella's Stepmother), *Seussical* (The Cat in the Hat), *Young Frankenstein* (Frederick), *Mamma Mia* (Harry Bright), *Forbidden Broadway* (Mandy Patinkin, etc.), the one-man-play *Buyer & Cellar*, and as the director of *The Rocky Horror Show* (FW Civic). He is incredibly lucky. He'd like to thank Brandon for saving the show, and so so much more.

ASHTON BARNHOUSE (*Peter*) This is Ashton's first production with Genesis Outreach Presents. Ashton has been blessed to have been a part of such a talented and devoted community of theatre. He has most recently been seen onstage in the Fort Wayne Civic's production of *Waitress*, Indiana Musical Theatre Foundation's productions of *Chicago* and *American Idiot*, as well as the Huber Opera House's production of *The Addams Family*. *Jesus Christ Superstar* has become such a favorite of Ashton's and he wants to express his gratefulness for the production team, the staff of Genesis Outreach, and his fellow actors for allowing him to be a part of such a timeless piece of theatre.

LINCOLN EVERETTS (*Simon/Featured Dancer*) is thrilled to return to the Genesis stage! FW Civic Theatre audiences will remember Lincoln for his title role in *The Spongebob Musical*, as well as leading *Elf - The Musical* as Buddy the Elf. He was also seen as Angel in IMTF's production of *RENT*. This is Lincoln's fourth Genesis show. Previous credits include *Ragtime* (Harry Houdini), *Parade* (Frankie Epps), and *Purlie* (Charlie). Lincoln would like to thank the production team and the entire cast for making this show an absolute blast to be a part of. @lincoln.everetts

Who's Who In The Cast

GABRIEL ZIMMERMAN (*Caiaphas*) This is Gabriel's Genesis debut! He is thrilled to be pursuing his passion for Musical Theatre, continuing his journey at Southern Illinois University. Gabriel is excited to showcase his talent and growth with an insanely talented cast. He is grateful to Brandon for this opportunity, to his parents for their constant support throughout his journey, Chris Mettert for starting this journey, and a special shoutout to his little nephew, Zeke, who, in between sobs and naps, provides some comfort at the end of days.

LINA WILLARD (*Annas*) is a Huntington County Native who now lives in Fort Wayne. She is so excited to be a part of one her all time favorite musicals and wants to thank Genesis Outreach Presents for the opportunity! Most recently Lina was seen as a Phantom in the *Rocky Horror Show* at the FW Civic! Some of her favorite roles include Sandra Bloom (*Big Fish*), Bella (*Lost in Yonkers*), Wednesday Addams (*The Addams Family Musical*), and Sarah Brown (*Guys and Dolls*). She spends her free time reading and cuddling her dogs. She would like to thank her mom for all the support through the years. She hopes you enjoy the performance!!

RYAN PEROZA (*Priest*) is making his Genesis Outreach Presents debut! He was last seen onstage in Fort Wayne Summer Music Theatre's *Phantom of the Opera* as the Phantom's first victim, Joseph Buquet. He specializes in prop making and enjoys online filmmaking.

CHRISSY BORNE (*Follower/Featured Dancer/Gossiper*) is over the moon to be part of this resurrected production. A veteran local performer, Chrissy was most recently seen in Genesis Outreach Presents' production of *PARADE* as Sally Slaton. Other credits include *CHICAGO* (Roxie Hart), *THE DROWSY CHAPERONE* (Kitty), *RAGTIME* (Evelyn Nesbit), *RENT* (Alexi Darling), and *TICK TICK BOOM* (Susan - Arena Award Recipient). Infinite thanks to Brandon & team for making the impossible possible. Love to Sean, biological fam, and theatre fam. For Dad, always.

ANYA (*Follower/Featured Dancer/Gossiper*) Genesis Outreach debut! Anya is thrilled to be joining the incredible cast of *Jesus Christ Superstar*. Previous favorite credits include Columbia in *The Rocky Horror Show*, Gertrude McFuzz in *Seussical*, and Jovie in *Elf*. Much love to her husband (and favorite choreographer) Eric, daughter, and family for their support. For Baba, always. Enjoy!

CORA LEE (*Follower/Featured Dancer/Gossiper*) is a multi-talented performer in the Fort Wayne area. They are ecstatic to finally debut this show as a featured dancer, and to support their fellow cast members, crew, and production team. Everyone has fought and worked so incredibly hard to make this show happen, and to see it come to life so beautifully has been a joy, so thank you! Cora would also like to thank Genesis Outreach Presents for taking a leap of faith to invest in this cast's potential. Exodus 33:20

AL PIPPINS (*Follower/Featured Dancer*) is excited to return for his second Genesis Outreach Presents production, after last being seen in *Purlie*! Al loves theatre and is honored to be a part of this special production. He has previously been seen in productions at Fort Wayne Civic Theatre and IMTF. He hopes to pursue theatre professionally in the future.

MANDIE KOLKMAN (*Featured Dancer/Co-Choreographer*) is thrilled to make her Genesis Outreach Presents debut as both performer and co-choreographer. Favorite past roles include Annie (*Chicago*), Helga (*Cabaret*), and James Wilson (1776). She co-directed *Cats* and *Songs for a New World*, and choreographed *Kinky Boots*, *Head Over Heels*, *Matilda*, and *SIX (Teen Edition)*. Mandie is Artistic Director of the Fort Wayne Dance Collective, producing over six community performances annually. She thanks Matt and Maeve for their support during this show and for always cheering her on.

Who's Who In The Cast

TAMIA BEVERLY (*Follower*) is thrilled to return to the Genesis stage! Her previous credits include Angela in *Parade* and Nettie in *The Color Purple*. She has also appeared in various IMTF cabarets and concerts. Grateful for the opportunities, learning experiences, and unwavering support from the theater community, she is excited for what's ahead. She would also like to extend a special thank you to her family, friends, and especially her director, Brandon Porter. @tamialovie

DAVE EALY (*Follower*) is excited to make a return appearance with Genesis Outreach Presents in *Jesus Christ Superstar!* Dave's most notable roles include *Rent* (Benny), *Songs for a New World* (Man 2), *The Addams Family Musical* (Lucas Beineke), *American Idiot* (Miguel), and *Parade* (Riley)! Dave would like to thank all his family and friends for supporting him through his musical journey!

JACKSON MCKINNEY (*Follower*) is very excited to be making his Genesis Outreach Presents debut with one of his dream shows and such an incredible team of people! For the last four years Jackson has been a student at Purdue University Fort Wayne, studying to earn his BFA in Musical Theatre and is set to graduate in early May 2025. Recent Fort Wayne credits include: Emcee in *Cabaret*; Mason Adams in *John Proctor is the Villain*; Nathan Wolfe in *The Catastrophist*; Rusty Charlie in *Guys and Dolls: In Concert*.

LESLIE RINGGER (*Follower*) is delighted to return to Genesis Outreach Presents with *Jesus Christ Superstar*. Past Genesis Outreach productions include *Ragtime* (Ensemble) and *Parade* (Ensemble). She hails from Bloomington-Normal, IL, where she performed in *And Then There Were None* (Vera) and *Charlie and the Chocolate Factory* (Narrator). Leslie also performed in FW Civic Theatre's *Jersey Boys* (Mary Delgado), IMTF's *Chicago* (Ensemble), and First Pres' 26 *Pebbles* (Jenn/Carla). She is grateful to the entire JCS cast and crew for this incredible experience.

ANGELA SHAW (*Follower*) Angela has enjoyed working with Genesis Outreach Presents, and is excited to return for her third production with the company. When she isn't on stage, Angela enjoys hanging out with her wonderful family and friends. As well as serving as the Praise Dance Ministry leader at her home church. She wants to thank her children, and the Genesis production team for always believing and pushing her to be all she can be.

DE'ANDRE MARTIN (*Follower/Soldier*) is a Fort Wayne native and a Purdue University Fort Wayne graduate, where he received degrees in Music Technology and Vocal Performance. De'Andre has worked in many facets of theatrical production. Most recently, De'Andre performed in Genesis Outreach Presents' productions of *Purlie* and *Parade*. He has been involved with several local vocal groups and churches and has performed nationally and internationally. De'Andre performed on the Carnegie Hall stage this past December during DCINY's A Winter's Light: The Music of Martin and Raye concert. De'Andre sends all thanks, glory, honor & praise first to God and second to his entire family for all their love & support!

EJ FIKES (*Follower/Soldier*) is excited to be in his second Genesis production! He grew up singing at New Covenant Worship Center, where he is an active member of both the youth and adult praise teams. A passionate performer, E.J. loves to sing and play the tambourine. His theater journey began in 2020 as Young Martin Luther King Jr. in *Building a Dream MLK*. He has also performed in Youththeatre's Young Heroes of Conscience Series. E.J. thanks his family and friends for their unwavering support!

ANNA OUSLEY (*Follower/Gossiper*) is a sophomore at PFW, where she is majoring in Music Education and Vocal Performance. She is excited to take the stage for her second production with Genesis Outreach Presents. Past credits include Betto (*Gianni Schicchi*), Essie (*Parade*), Gaelen/Brooke Wyndham u/s (*Legally Blonde*), Three Blind Mice (*Shrek*), and Ballerina (*Phantom of the Opera*). She would like to thank her teachers and family for their unwavering support.

Who's Who In The Cast

OLIVIA RANG (*Co-Choreographer*) Theatre Credits include: FW Civic Theatre - *Young Frankenstein*, *Matilda*, *Hello Dolly!*, *Something Rotten*; Arena Dinner Theatre - *A Little Night Music*, *Assassins*, *Clue*; Three Rivers Music Theatre - *Cabaret* and *CATS*. Her choreography has been seen in FW Civic Theatre's productions of *The Little Mermaid*, and *The Rocky Horror Show*; Three Rivers Music Theatre's *HAIR*; Arena Dinner Theatre's *Assassins* and *A Little Night Music*; Genesis Outreach Presents *Parade*, and the Fort Wayne Philharmonic's *Holiday Pops*. Sending all the love and gratitude to Austen, Georgia, and my wonderful family and friends! @owiviawang

ERIC SMEAD (*Co-Choreographer*) is excited to be making his Genesis debut with JCS! With over a decade of experience, Eric has worked extensively with regional show choirs, choreographed numerous high school musicals, and taught dance and choreography classes at Carroll High School. Throughout his career, he has choreographed over 15 musicals; favorites include *Newsies* (Whitley Arts Partnership), *Matilda* (Carroll High School), *The Music Man* (Whitley Arts Partnership), and *Freaky Friday* (Bishop Dwenger High School). He sends much love to his wife, Anya, and daughter, Mila, for their unwavering support.

SHAWNA ROBERTS (*Production Stage Manager*) has worked backstage for local theatres for the past 10 seasons. Stage Manager credits include *Sweeney Todd*, *Seussical*, *White Christmas* [FW Civic Theatre (Anthony Award for Excellence in Technical Theatre)]; *Hairspray*, *Phantom of the Opera*, *Legally Blonde* (FWSMT), *American Idiot*, *RENT*, *Chicago* (IMTF), *Kinky Boots*, *Cats* (FWDC/TRMT), *Hedwig and the Angry Inch* (TRMT), *Ragtime* (Genesis Outreach Presents). Next, Shawna will be back with FWSMT/IMTF for *Sweeney Todd*, *Avenue Q*, and *Company*. To D'Arcy & Logan – thanks for being my favorites.

JOY HENDERSON (*Assistant Stage Manager*) is excited to be making her Genesis debut. While trying to figure out her calling in life, you might catch a glimpse of her backstage with many different companies. She thanks you for coming and hopes you enjoy the show!

COREY LEE (*Lighting Designer*) received a B.A. in Theatre and a B.S. in Secondary Education from Purdue University Fort Wayne and a M.F.A. from the University of Memphis. He was most recently the Visiting Assistant Teaching Professor in Lighting Design for the Department of Theatre and Dance at Ball State University. Corey has also worked with many local organizations including the Fort Wayne Civic Theatre, Fort Wayne Youtheatre, Purdue University Fort Wayne, Fort Wayne Philharmonic, Huntington University, Summit City Music Theatre, and Northrop High School.

RIN ULICK (*Costume Designer*) is a senior costume design theatre major at Purdue Fort Wayne. Their most recent design credit was *John Proctor is the Villain*. Ulick's next step in their career is graduate school! Next fall, she will be pursuing an MFA in costume design at Southern Illinois University Carbondale. No stranger to the stage, Rin has been seen acting in productions at PFW like *The Tempest*, *Puffs!*, and *Eleemosynary*. Rin is elated to take on this project, as it has been a dream show to work on for years.

TERA WOOLEY (*Sound Designer*) is excited for another show with Genesis Outreach Presents! She graduated from Eastern Michigan University in 2020 with a degree in Sound Design for Theatre. She has designed and mixed musicals all over the Midwest for almost 10 years. Some of her favorite shows have been *PARADE* (Genesis Outreach), *IF/THEN* (University of Wisconsin - Green Bay), and *WEST SIDE STORY* (Encore Musical Theatre Company). She would like to thank her mom and dad, her boys, Tonks and Mulligan, and her friends for their continued support. @teralynnsounddesign

BRENDEN ROWAN (*Associate Lighting Designer*) is a theatrical designer pursuing a BFA in Lighting Design at Ball State University. Brenden's design credits at BSU include *Cabaret*, *Revolt*, *She Said*, *Revolt Again*, *Little Women*, and *The SpongeBob Musical* (Assistant Lighting Designer). Brenden has also worked with Summer Arts Camps in Wabash, Indiana where he worked on *Anastasia*, *Matilda*, and *Mary Poppins Jr*. Brenden looks forward to designing *Romeo and Juliet* in the fall at the Brown Family Amphitheater at Ball State.

Thank You

Chase Emmert
D'Arcy Roberts
Dill Pickle
Genesis Outreach Inc. Staff
Indiana Musical Theatre Foundation
Leavell Originals
Plymouth Congregational Church
Purpose Photography
Robert Nance
University of Saint Francis
USF Facilities and Events Team

Mission

Our artistic mission is to build awareness, social advocacy, and conscious change through theatre arts and meaningful performances that peer beyond the fourth wall into the hearts and minds of audience members.

100% of event proceeds benefit programs and services to community and transitional housing residents.

FOLLOW US ON SOCIALS



@Genesis Outreach, Inc. @genesisoutreachpresents.

Jesus Christ Superstar
was made possible due
to supporters like YOU!


*DONATE
TODAY!*



JESUS CHRIST
SUPERSTAR
MERCH



Scan me!



DESIGNING STAGES FOR
EXCEPTIONAL PERFORMERS

ELEVATUS IS A PROUD SUPPORTER OF
JESUS CHRIST SUPERSTAR
AND
GÉNESIS OUTREACH PRESENTS!

WWW.ELEVATUS.COM



ANNOUNCING OUR 2025-2026 SEASON

SLAVE PLAY

BY

**JEREMY O.
HARRIS**

OCTOBER 31 -
NOVEMBER 9, 2025

A Soulful Christmas

A Gospel Celebration

DECEMBER 12-14, 2025

CAROLINE,
or CHANGE

FEBRUARY 20 -
MARCH 1, 2026